



## Conveyor Equipment Manufacturers Association Semi-Annual Press Release

### CONVEYOR INDUSTRY SEES IMPROVEMENT IN FIRST HALF OF 2004

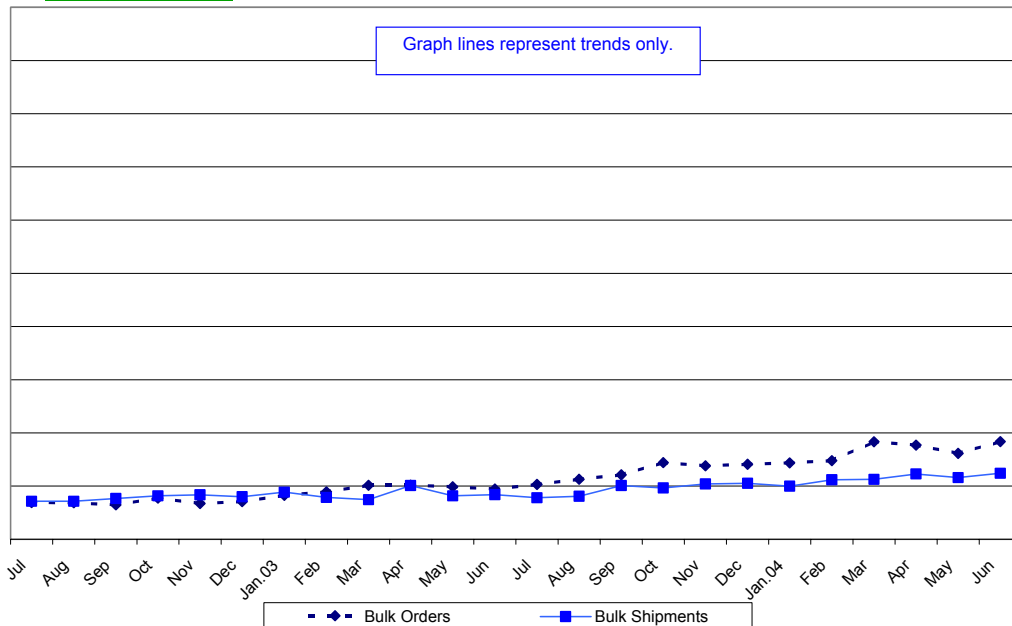
September 17, 2004

NAPLES, FLORIDA – The Conveyor Equipment Manufacturers Association (CEMA) reports that total new orders increased 7% and billed sales (shipments) were up 9% in the first half of 2004. Increases were due to strong Bulk Handling orders and shipments. Orders were down 12% and shipments were down 5% for Unit Handling in the first six months of 2004. CEMA estimates that industry new orders totaled \$2.46 billion and shipments totaled \$2.69 billion, both up slightly from 2003. The executives representing CEMA member companies who attended the fall meeting felt confident that new equipment orders and shipments would continue to recover in 2004. CEMA President, Jim Lamb announced the results at the Association’s Fall meeting in Chicago, Illinois, in September.

CEMA tracks new orders and shipped sales volume in seven classes of unit handling equipment and five classes of bulk handling equipment. The graphs shown below plot monthly order and sales trends from reporting CEMA member companies between July 2002 and June 2004. Trends are totaled and graphed for all product classes in Bulk Handling Equipment, Unit Handling Equipment and Total CEMA members. An electronic version of this document and graphs is located on the CEMA web site at [www.cemanet.org/press/semi.html](http://www.cemanet.org/press/semi.html)

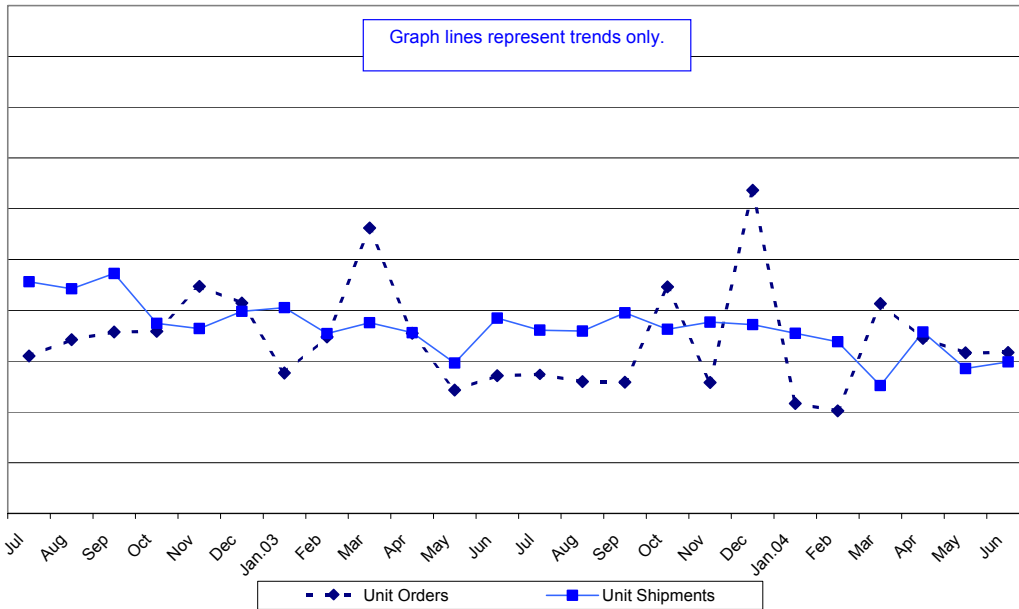


### Bulk Orders and Shipments

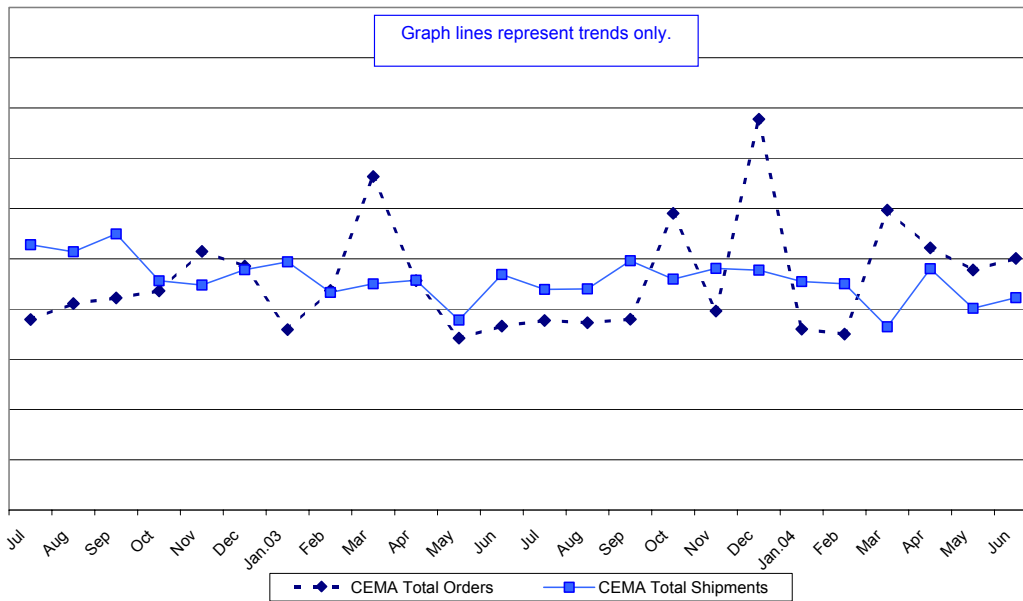




## Unit Orders and Shipments



## CEMA Total Orders and Shipments



Founded in 1933, CEMA is the trade association of leading North American conveyor equipment manufacturers and engineering firms.

CEMA also offers safety labels, useful technical information and manuals for all types of conveyor equipment. Visit our web site at <http://www.cemanet.org> for further information on CEMA or its member companies, to order safety labels or obtain technical information.