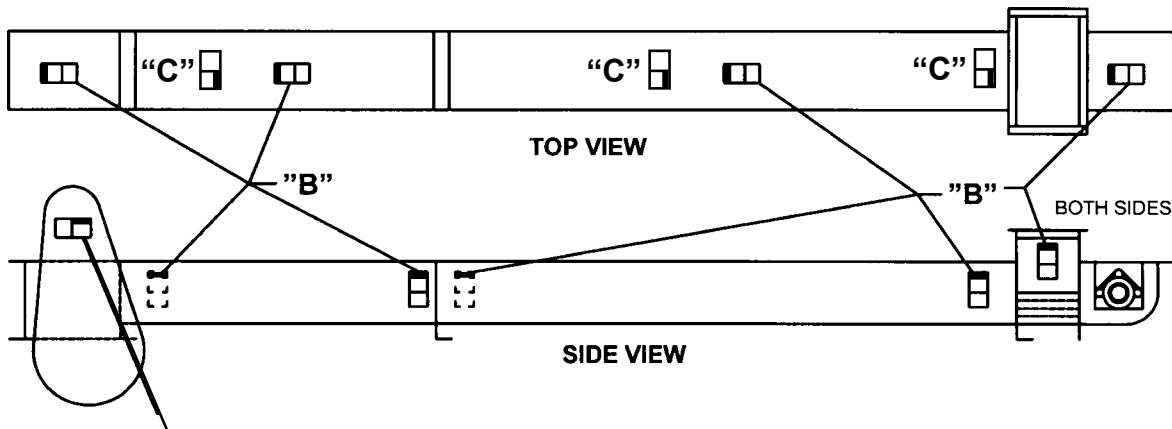


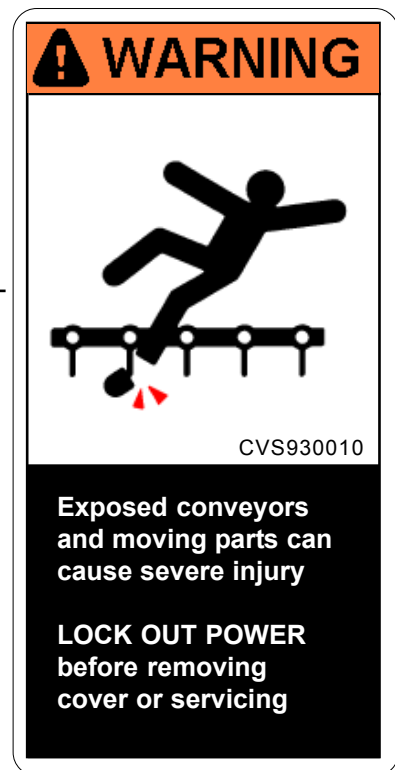
Product: Screw Conveyors

Equipment: Drag Conveyor



"A"

To be placed on inlets and discharges, troughs, covers, and inspection doors of screw conveyors to provide warning against exposed moving parts while in operation.



"B"

To be placed on removable guards to warn that operation of the machinery with guards removed would expose chains, belts, gears, shafts, pulleys, couplings, etc. which create hazards



"C"

- NEAR SIDE
- FAR SIDE

USE LABEL "A" ON BELT GUARD
 USE LABEL "B" ON ENDS OF TROUGH, MIDDLE OF COVERS AND AT INLET OPENING.
 USE LABEL "C" ON TOP OF COVERS

