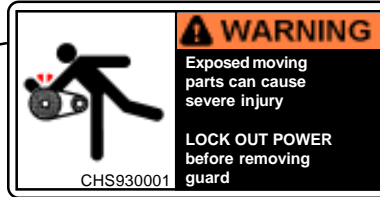
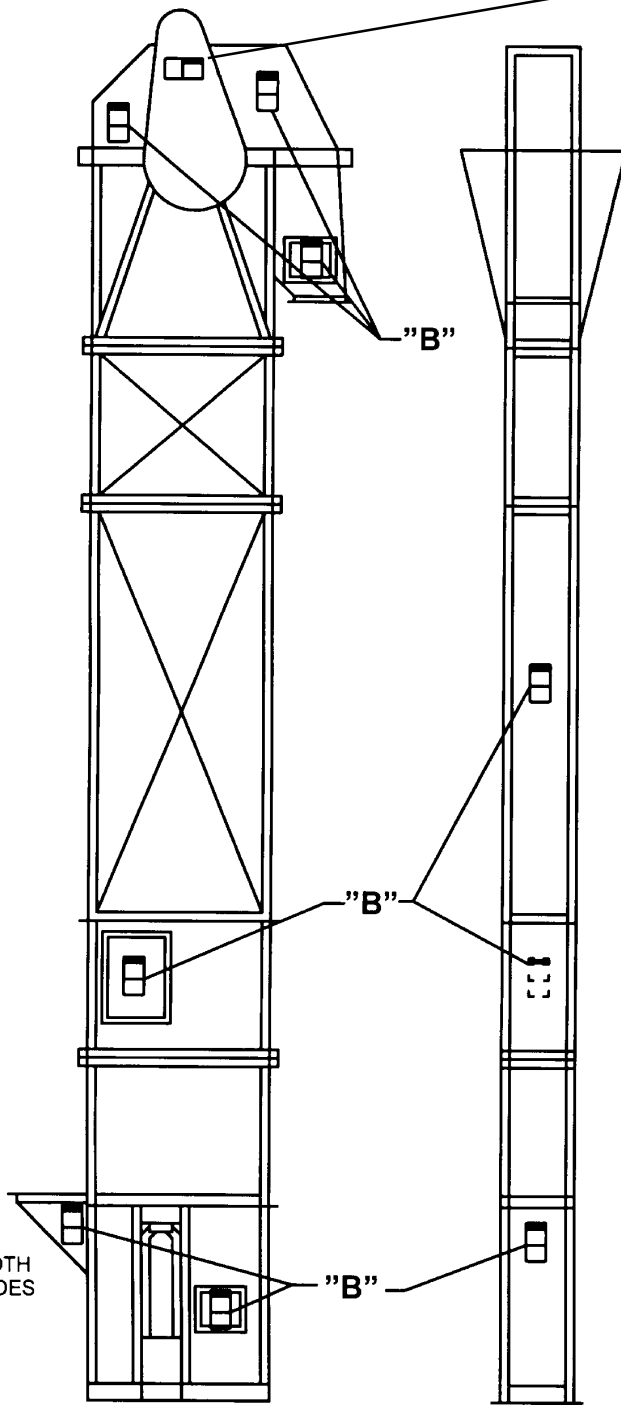


Product: Screw Conveyors



Equipment: Bucket Conveyor

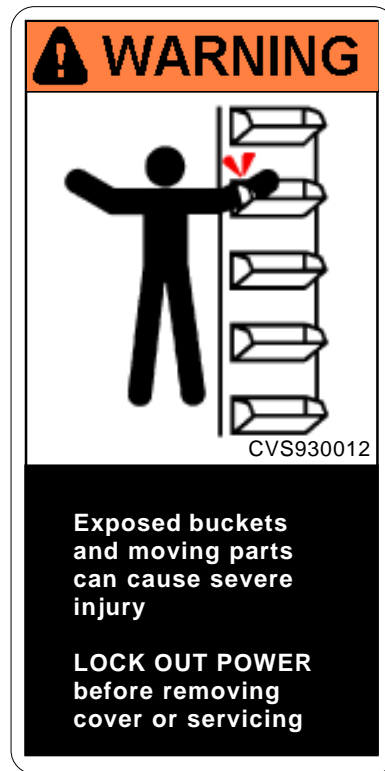


"A"

To be placed on removable guards to warn that operation of the machinery with guards removed would expose chains, belts, gears, shafts, pulleys, couplings, etc. which create hazards

USE LABEL "A" ON BELT GUARD
 USE LABEL "B" ON EACH SIDE OF INTAKE,
 ALL BOLTED PANELS AND INSPECTION
 DOORS, AND BOTH SIDES OF SPLIT HOOD.

-  NEAR SIDE
-  FAR SIDE



"B"

To be placed on intakes, bolted guards and panels, hoods and doors of bucket conveyors to provide warning against exposing buckets and moving parts while in operation.

BOTH SIDES

