

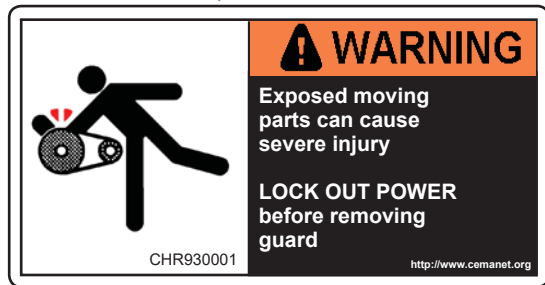
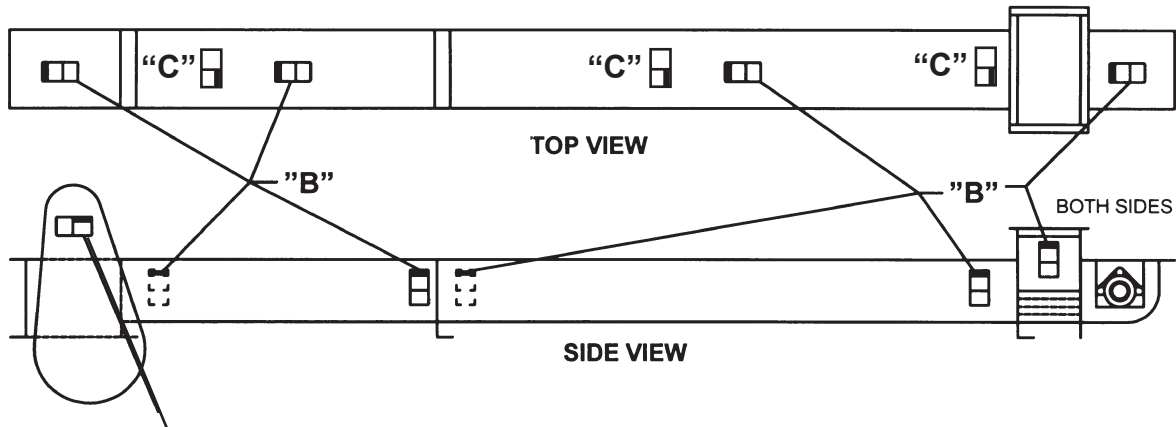
CEMA Safety Label Placement Guidelines

CEMA Safety Labels

Placement Guidelines

Product: Bulk Handling Equipment

Equipment: Drag Conveyors



"A"

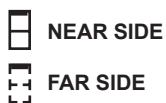
To be placed on removable guards to warn that operation of the machinery with guards removed would expose chains, belts, gears, shafts, pulleys, couplings, etc. Which create hazards.

To be placed on inlets, discharges, troughs, covers, and inspection doors of screw conveyors to provide warning against exposed moving parts while in operation.



"C"

USE LABEL "A" ON BELT GUARD
USE LABEL "B" ON ENDS OF TROUGH, MIDDLE OF COVERS AND AT INLET OPENING.
USE LABEL "C" ON TOP OF COVERS



"B"