

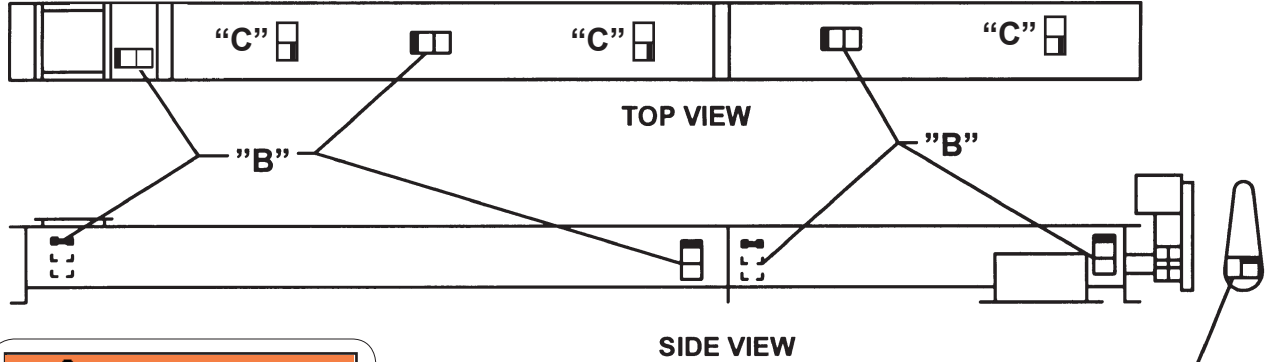
CEMA Safety Label Placement Guidelines

CEMA Safety Labels

Placement Guidelines

Product: Bulk Handling Equipment

Equipment: Screw Conveyors



⚠ WARNING

CVS930011

Exposed screw and moving parts can cause severe injury

LOCK OUT POWER before removing cover or servicing

<http://www.cemanet.org>

“B”

To be placed on inlets and discharges, troughs, covers, and inspection doors of screw conveyors to provide warning against exposed moving parts while in operation.

⚠ WARNING

Exposed moving parts can cause severe injury

LOCK OUT POWER before removing guard

<http://www.cemanet.org>

CHR930001

“A”

⚠ WARNING

Walking or standing on conveyor covers or gratings can cause severe injury

STAY OFF

<http://www.cemanet.org>

CHS991026

“C”

To be placed on removable guards to warn that operation of the machinery with guards removed would expose chains, belts, gears, shafts, pulleys, couplings, etc. Which create hazards.

- NEAR SIDE
- FAR SIDE

USE LABEL “A” ON BELT GUARD
 USE LABEL “B” ON ENDS OF TROUGH, MIDDLE OF COVERS AND AT INLET OPENING.
 USE LABEL “C”: ON TOP OF COVERS

