

CEMA Safety Label Placement Guidelines

CEMA Safety Labels

Placement Guidelines

Product: Unit Handling Equipment

Equipment: Chain Driven Live Roller Conveyors

General purpose label to warn maintenance personnel that conveyors should be shut off and locked out prior to servicing. Examples: drives, take-ups, lubrication points which require guard removal.

To be placed along both sides of these conveyors since these conveyors provide surfaces and profiles attractive, but hazardous, for climbing, sitting, walking, or riding.

To be placed on removable guards to warn that operation of the machinery with guards removed would expose chains, belts, gears, shafts, pulleys, couplings, etc. Which create hazards.



"A"

SPACE UP TO A MAXIMUM OF 20 FT. CENTERS (BOTH SIDES)



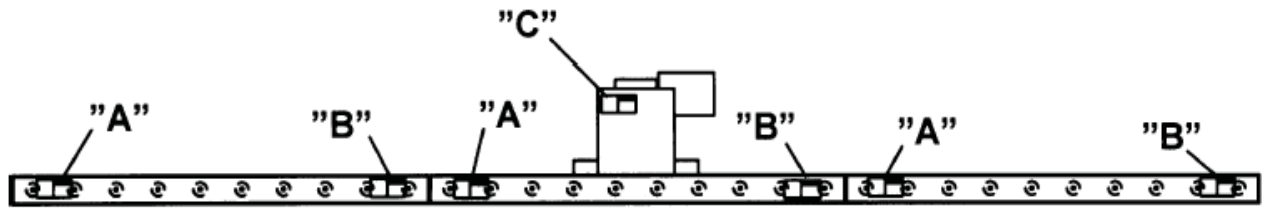
"B"

SPACE UP TO A MAXIMUM OF 20 FT. CENTERS (BOTH SIDES)



"C"

LOCATE AT DRIVE GUARDS



CHAIN DRIVE

